

ECOFEMINISM REFLECTED IN FILM MALEFICENT

Sabilla Nur Farisa. 2017. *Ecofeminism Reflected in Film Maleficent*. Thesis, English Education Department STKIP PGRI Jombang. Afi Ni'amah, S.Pd., M.Pd

Abstract

Ecofeminism is a relationship between women and nature, which is very important in the era of globalization regarding gender equality and ecofeminism raises women and nature as the main thing that should not be underestimated. The value of ecofeminism is felt to have been reflected in a film entitled "Maleficent" which was released in 2019 which is the second series with the "Mistress of Evil" series, played by Angelina Jolie as the main character. This research uses a qualitative descriptive method and adopted Warren 1997's theory of ecofeminism which has 4 indicators related to ecofeminism reflected in the Maleficent film, namely: 1. Characterization through appearance, 2. Characterization through dialogue, 3. Characterization through external action, 4. Characterization through internal action. The four indicators can be found in the Maleficent film with the right analysis in the film.

Keyword : Ecofeminism, Film Maleficent, Characterization

Introduction

Literature is human expression, it has been widely known by many people and experts. People usually have many ways in expressing their feeling, experience, thought, imagination, idea and the term 'literature' is used to describe what in mind, idea, beliefs and other expression into a creative writing. According to Connolly 1997 ; Halidasia, 2016 mentions two main division of literature that are literature of knowledge and literature of imagination. The literature of knowledge presents of interprets facts, ideas, or happenings. The literature of imagination interprets experience by a factitious presentation of persons, ideas and events. However, now days, when the technology of media of communication was more advanced, the society now if literature is not only how words are read from the page but also how the whole worlds of sight and sound, recorded and one of the production is film.

Film

One of literary works that can impress the viewer and give some values about life is film. Film is art that shows the illustration how people live in the certain places, how people think and act to certain things in social life, and film shows the real life of the society although sometimes the story is fiction. Film has become one of the most popular media in literature nowadays. Film is a new form of literary work. It is different of the other previous literary works, such as novel and drama. Film is a motion

pictures which requires convention and has abilities to change the setting quickly and sound effect dramatically, so that the viewers are satisfied without setting in front of the stage. Therefore, film is meant to be learnt from what happened to the past. Film is also media of communication and education which represents the situation and condition of human life. All of film must have a genre or category, it is a term for any literary category or other form of art or entertainment, such as music, whether written or spoken, audio or visual based on some stylistic criteria. Several genres of film are very interesting, depending on the viewer's point of view, age, and also the nature of the film itself (storyline, acting, directing, selection of actors, and so on). According to Dirks 1996; Hegarsari, 2017 Main Film Genres, there are eleven genres of film. They are action, adventure, comedy, crime and gangsters, drama, epics/historical, horror, musical (dance), science fiction, war (anti-war), and western film. **Film Maleficent**

Maleficent is one of film with the fictional adventure genre. This film, starring Angelina Jolie, tells the story of Angelina Jolie as the main character in this film, namely Maleficent. The film, which was released on 18 October 2019 in the USA, was watched by more than 11.24000 viewers. This film is adapted from sleeping beauty film 1959 classic animation, so that most people know about the story and it must be familiar for them. The film Maleficent also received the Kids' Choice Awards USA 2020 as a favorite film and also received an award from the 2019 Hollywood Music In Media Awards (HMMA) as Best Original Score - Sci-Fi / Fantasy Film (quoted from IMDb (an acronym for Internet Movie Database) is an online database of information related to films, television programs, home videos, video games, and streaming content online). Becoming the fourth highest grossing film and also successful commercial, having grossed over \$758 million worldwide.

Characterization

Characterization is character's image in a story, meanwhile character is a person who takes role in a story. Characterization in literature is the presentation of attitude and behavior of imaginary person in order to make them credible to the author's audience, it means that characterization in literature as a describer a character in a story that differentiates on character to other character. And this research will discuss about Maleficent as main character film Maleficent because Maleficent who has dominant character and fullfil characterization as main character in film Maleficent . The film Maleficent itself is not the first film for Jolie to portray a female character like this. Angelina Jolie is known as an actress who often plays strong female characters and may represent feminism. In literary work, character and characterization are important elements in a story. Character was imaginative people who took part in the story and makes the story seem 'true to life' it means that character is a player in a story that represents a people to make story lively. First and last we become absorbed in the

character: how they look and what their appearance tell us about them, what they say and what their manner of saying express, what they do and know how their action reveal who they are represent (Yanni 1957; Asmindia, 2018).

Ecofeminism

Women are often identified with consumption, especially with mass communication, so it often positions women against terms that have a positive value - "production", "authenticity", "individuality", "rationality". Feminism means essentially that women's or gender perspective is applied to a variety of social phenomena.. Feminism comes from Latin, femina or female, which refers to any ideology that seeks equality for women. In an effort to end the historical of men domination over women, which is largely rooted in western intellectual traditions and ultimately gained worldwide recognition. In cultural studies femininity is a category of identity that refers to the social and cultural characteristics associated with being women. This is a discursive performative construction that describes and disciplines the cultural meaning of being a woman. Thus, femininity must be understood as culturally regulated behavior that is considered socially appropriate for women. Therefore, for cultural study, femininity is not an essential quality of the subject that is manifested but a matter of representation where sexual identity is formed through speaking and disciplining the body. Warren, 1997; Hegarsari 2017 theory. "Ecofeminism is the position that there are important connections-historical, symbolic, theoretical-between the domination of women and the domination of nonhuman nature." Based on the theories, it can be concluded that the condition of oppression, dominance of men and inequality between men and women in getting rights in society are not naturally available since human is created. But, it is constructed by society itself because their culture and historical condition. That phenomenon can be changed because actually the society is the creator of that phenomenon. Thus, it can be concluded that actually the social problems faced by feminism can be solved by the society itself by changing the rules which makes women oppressed. And Ecofeminism, also called ecological feminism, branch of feminism that examines the connections between women and nature. Its name was coined by French feminist Françoise d'Eaubonne in 1974. Specifically, this philosophy emphasizes the ways both nature and women are treated by patriarchal (or male-centred) society. Ecofeminism is expressly committed to making visible the nature and significance of connections between the treatment of women and the treatment of nonhuman nature, or "women - nature connections". Ecofeminism claims that understanding women-nature connection is essential to any adequate feminism or environmental. Ecofeminism born of an anxiety would feminist prespective on nature and human behavior (women) who proved destructive to the ecological and creating gender inequality, which in turn threatens the process of development and human existence itself.

Method

The researcher use descriptive qualitative method that is suitable with the aim of this research. The data description is reviewing an event “Qualitative research study things in their natural setting, attempting to make sense of, or to interpret, phenomenon in terms of the meaning people bring to them” Denzini 1994; Asmawati 2015. The researcher take a research by watching the film then take a sample for the data. Which mean, the researcher didn't need to make a diagram or counting some sample to get an result. The researcher observe the data by take some scene or take a dialogue from the main character which related to ecofeminism and the result can be the data. The significance of the study is theoretically adopted the Warren 1997; Hegarsari, 2017 theory of Ecofeminism that can be useful to the next researchers who want to analyze same object, but they can use different point of view for this research. this study focuses on analyzing ecofeminism in the film Maleficent on Warren 1997; Hegarsari, 2017 theory. “Ecofeminism is the position that there are important connections-historical, symbolic, theoretical-between the domination of women and the domination of nonhuman nature.”. There is Maleficent as the main character in film Maleficent which reflected to ecofeminism by the figure of the main character, setting of nature and the action of the main character by the scene or dialogue. this study focused on Ecofeminism which is reflected by film Maleficent : Mistress of Evil (2019) from the figure of the main character, setting of nature and the action of the main character by the scene or dialogue.

Finding and Discussion

A. Ecofeminism which reflected by Maleficent as the main character in film Maleficent

1) Characterization through Appearance

F-1 (Figure 1)



This scene shows the main character in the Maleficent film, she is Maleficent the Queen of the Moors Kingdom. She seemed to be in the wild, more precisely on a high cliff in the middle of the forest in the Moors kingdom. Maleficent is not in the form of other humans, there are two sturdy horns on her head like a bull, a pair of wings that spread wide with jet black color and sharp eyes like an eagle. Maleficent's fangs are like

a bat also visible which makes her appearance very different from humans in general. Maleficent's appearance is categorized as ecofeminism because the things in her really show the connection between women and nature, especially wild animals. As Warren stated that characterization through appearance is the method to know the actor's look and the type of the clothes that she/he wearing in the film.

F-2 (Figure 2)



This scene shows Maleficent coming to meet King John's invitation to the Kingdom of Ulstead for dinner while talking about the marriage of his daughter, Aurora, to Prince Philips of the kingdom of Ulstead. It looks like Maleficent came with one of her confidants, Diaval, who is actually a crow demon. Maleficent came in stunning with a slightly different look, realizing that she was invited into the human palace, so she tried something new to wear. She wore a glittering black dress with embellishments, a black cloth that she used to cover her pair of horns, and a little make-up that made Maleficent look like a very graceful and dignified Moors Queen. In this scene, Maleficent tries to always smile to appreciate the residents of the royal palace of Ulstead and keep no humans from being afraid of her presence. As Warren stated that characterization through appearance is the method to know the actor's look and the type of the clothes that she/he wearing in the film.

F-3 & F-4 (Figure 3 & Figure 4)



In this scene, Maleficent is angry at Queen Ingrith's cheating (mother of Prince Philip) which then makes Maleficent attack the Ulstead kingdom with her new power. Maleficent looks with wings that are more spread wide with sharp tips, more pointed fangs, more conspicuous horns and also a greenish glow that comes from the flapping of its wings full of magic. Maleficent also appeared in a different dress from before, still black but with a design that was suitable for a woman with a fighting spirit, perfectly

suiting to Maleficent who was at the peak of anger with a sharp gaze full of ambition. . As Warren stated that characterization through appearance is the method to know the actor's look and the type of the clothes that she/he wearing in the film.

F-5 & F-6 (Figure 5 & Figure 6)



In this scene, Queen Ingrith tries to kill Maleficent by shooting her then pushing Aurora from the top of the tower, and immediately Maleficent's anger escalates so that she takes out her greatest strength and transforms herself into a giant Phoenix (Phoenix is a kind of legendary firebird that told as the ancestor of Maleficent). Maleficent, who originally looked like a woman with wings, has now turned into a giant bird with a sharp forward beak, fiery wings, dark black feathers, and sharp eyes full of ambition. This change of form was triggered by Maleficent's anger so that the greatest power within him now came out naturally and was able to ravage the Ulstead kingdom.

2) Characterization through Dialogue

A-1 (Action 1)



Aurora: Philip ask me to marry him

Maleficent: No

Aurora: I wasn't really asking

Maleficent: Nor was I. Love doesn't always end well, Beauty.

In this scene, it appears Maleficent with Aurora (Maleficent's daughter) are talking in a park in the middle of the Moors kingdom, here Aurora asks for permission to marry Prince Philip from the Kingdom of Ulstead (the human kingdom). Aurora explains to Maleficent that she will insist on marrying Prince Philip despite Maleficent's difficulty with her permission. Maleficent certainly did not immediately agree to this because he knew that the human

kingdom would only destroy the Moors kingdom and its ecosystem and take over for the benefit of humans themselves. On the sentence "Love doesn't always end well, Beasty." What Maleficent said to Aurora, this sentence is actually a warning to Aurora about the love story of Moors with humans that ended in an unhappy ending. This is certainly what Maleficent feels herself, where in her youth she experienced difficult times and slumped after trusting a human who turned out to betray her and even only used herself and things in the Moors kingdom. As Warren stated that character in fictional film naturally reveal a great deal about themselves by what they say based on their thought, attitudes, and emotion which is can be revealed in subtitle ways through word voice.

A-3 (Action 3)



Ingrith : I'm so happy because after this Aurora will become Princess of the Kingdom of Ulstead because I always wanted a daughter and Aurora will get a real mother and feel how to live well with humans.

Maleficent : But I don't think all humans can do good, many of your people attack our kingdom for personal gain and don't even have any compassion at all. In this scene, it can be seen at a luxurious dinner event in the Ulstead Kingdom where this event is a meeting night between the two families of the bride-to-be Aurora and Prince Philip. Queen Ingrith who is the mother of Prince Philip, from the beginning did have a cunning plan to control the miraculous Moors to be used by humans. During the dinner, Queen Ingrith mentioned Aurora's whereabouts after marriage. Will Aurora become Queen of the Moors to replace Maleficent someday, or live as a royal princess in the kingdom of Ulstead. Queen Ingrith also mentioned about Aurora's life which is far from normal, because she grew up and grew up in an environment of strange creatures in the Moors where Aurora is the only human in the Moors. This of course greatly angered Maleficent and replied to Queen Ingrith's words about the incident several years ago, when humans burned the Moors border gate with the intention of destroying and even stealing in the miraculous Moors Kingdom. From this scene and dialogue, we can conclude that Maleficent as the main character in this Maleficent film has a strong soul in maintaining the ecosystem of the Moors kingdom. As Warren stated that character in fictional film naturally reveal a great deal about themselves by what they say based on their thought, attitudes, and emotion which is can be revealed in subtitle ways through word voice

S-3 (Setting 3)



Maleficent : what is that?

Connal : Phoenix, he is our ancestor and you are his direct descendant. you have the same power as him.

In this scene, Maleficent and a Dark Fey (a winged species like Maleficent) named Connal have been looking around the area where Connal and several other Dark Fey are. Many lives are hidden in order to keep people safe. Maleficent is shown a fossil of a large bird-like animal named Phoenix. Connal explains that the Phoenix is the ancestor and the origin of the Dark Fey. Phoenix is a large creature that has extraordinary power, Connal also explains that Maleficent has the same power as Phoenix because he is a direct descendant of Phoenix. From this we can conclude that the relationship between women and nature is highly reflected in Maleficent's character. In addition to being brave at heart, he is also very closely related to protecting nature and ecosystems, in fact he is also a direct descendant of the Phoenix which is known to be very powerful and has many miracles. As Warren stated that character in fictional film naturally reveal a great deal about themselves by what they say based on their thought, attitudes, and emotion which is can be revealed in subtitle ways through word voice.

A-16 (Action 16)



Maleficent : Borra, its time to go home

In this scene, a group of Dark Feys are seen standing in front of Maleficent in the middle of the chaotic Ulstead royal courtyard. The Dark Fey, led by Borra, thanked Maleficent for his hard work to maintain and even fight for the life of Dark Fey in the midst of the threat of extinction due to human activities. In this scene, Maleficent tells Borra to go home, this indicates that the existence of Borra and the other

Dark Fey is safe because Maleficent has conquered the kingdom of Ulstead which ended peacefully without any further fighting.

3) Characterization through External Action

A-2 (Action 2)



In this scene, Maleficent's hand is shown who is about to eat a treat but she holds her hand because in front of her there is a cutlery made of iron. This happened at the dinner table during a two-family gathering between the Aurora family of Moors and Prince Philip's family of the kingdom of Ulstead. The royal party deliberately gave iron cutlery because the mastermind of all this was Queen Ingrith.. This shows the connection between women and nature which is reflected by Maleficent as the main character, because Maleficent is a natural being who naturally lives in an environment far from civilization, and Maleficent and other Moors are outwardly allergic to foreign objects such as iron. As Warren stated that the best reflection of character are person's action because the real character are more than just instrument of the plot that they do are what they do for a purpose, out of motives that are consistent with their overall personality. That's why, there should be clear relation between a character and his or her action should grow naturally of the character's personality.

A-6 (Action 6)



In this scene, it appears that King John lay helpless suddenly after a commotion caused by a dispute between Queen Ingrith and Maleficent. This makes Aurora surprised and feels that Maleficent has done something bad to King John, while Maleficent has done nothing to King John. Aurora looked at Maleficent as if Maleficent had done evil to King John, while Maleficent looked sadly at Aurora because she did not think that her own daughter did not believe her. With no anger, Maleficent flew away from Aurora in the kingdom of Ulstead with a bad feeling. As Warren stated that the best reflection of character are person's action because the real character are more than just

instrument of the plot that they do are what they do for a purpose, out of motives that are consistent with their overall personality. That's why, there should be clear relation between a character and his or her action should grow naturally of the character's personality.

A-7 (Action 7)



In this scene, Maleficent who originally flew from the kingdom of Ulstead is suddenly shot with a poisoned rifle by Queen Ingrith's right hand which causes Maleficent to fall unconscious and fall in the middle of the ocean. This is a plot, where Maleficent will meet the same creature as herself for the first time because when Maleficent drowned in the middle of this ocean, someone with a pair of wings and horns came to save her.

S-1 (Setting 1)



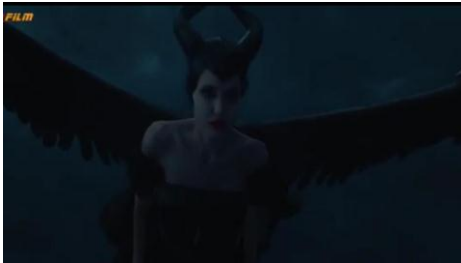
This scene shows Maleficent with a pale face and confusion about her whereabouts. The strange place he had just visited, was like a bird's nest but had many passages, the occasional sound of flapping wings from outside this place. Maleficent walked through this place and walked slowly until she realized that this was indeed a lair, more precisely this was the hiding place of the Dark Fey from the humans who were after them.

A-9 (Action 9)



While talking to Connal, Maleficent was suddenly stunned by her empty eyes that flashed a bright color. There seemed to be some uneasiness coming out of nowhere and he followed his heart that something was wrong with the Moors. This scene shows Maleficent's inner attachment to her environment, this is an example of ecofeminism that is reflected by Maleficent as the main character in the Maleficent film. As Warren stated that the best reflection of character are person's action because the real character are more than just instrument of the plot that they do are what they do for a purpose, out of motives that are consistent with their overall personality. That's why, there should be clear relation between a character and his or her action should grow naturally of the character's personality.

A-10 (Action 10)



In this scene, Maleficent is seen flying towards the Moors and accompanied by several Dark Fey. And sure enough, the Moors were in a dangerous state. The reason is, some of Ulstead's royal troops have stolen and even attacked the Moors on the orders of Queen Ingrith. This of course made Maleficent angry and attacked the troops from the Ulstead kingdom. The inner relationship between Maleficent as the main character in the Maleficent film and the nature in which she lives is an example of ecofeminism reflected in the Maleficent film. As Warren stated that the best reflection of character are person's action because the real character are more than just instrument of the plot that they do are what they do for a purpose, out of motives that are consistent with their overall personality. That's why, there should be clear relation between a character and his or her action should grow naturally of the character's personality.

A-12 (Action 12)



In this scene, the Dark Fey attack the Ulstead kingdom which has stolen, damaged, and even kidnapped the miraculous Moors for human personal gain. Maleficent and the Dark Fey attacked the troops of the kingdom of Ulstead while rescuing the Dark Fey and the Moors who were held captive by the soldiers of the kingdom of Ulstead. This scene shows the importance of the Moors and everything in it for Maleficent, this is an ecofeminism that is highly reflected in the Maleficent film. It can be seen from Maleficent's struggle, which from the beginning has continued to maintain the lives of the Moors, plus now she has met Dark Feys of the same species as her. As Warren stated that the best reflection of character are person's action because the real character are more than just instrument of the plot that they do are what they do for a purpose, out of motives that are consistent with their overall personality. That's why, there should be clear relation between a character and his or her action should grow naturally of the character's personality.

A-14 (Action 14)



In this scene, it appears Maleficent is preparing to attack its main target, Queen Ingrith, who caused all this chaos. Maleficent appears with a new look accompanied by new powers, this she got after meeting the Dark Fey and realizing she had something big inside of her. Maleficent in the midst of the chaos of the Ulstead kingdom continues to avoid attacks from Ulstead's troops while saving the Dark Fey who are entangled in ropes, Maleficent continues to circle outside the palace while looking for the right opening to attack Queen Ingrith This is certainly very risky and dangerous but Maleficent still does it in order to save the Moors and the freedom of all Dark Fey's lives.

A-15 (Action 15)



In this scene, it appears that a large black phoenix which is the incarnation of Maleficent is flapping its wide wings throughout the Ulstead royal palace with the aim that all wars can end because of the power that arises from unfortunately which has hidden magic. instantly all fighting stopped and reconciled on Maleficent's orders. Not

long after, Maleficent transformed back into her original form as a woman with horns and a pair of dignified wings.

S-4 (Setting 4)



In this scene, it appears Maleficent is holding Aurora towards the Altar. After all the chaos, Maleficent finally agreed to their marriage, all the people of the kingdom of Ulstead and Moors apologized, helped and rejoiced. The little Moors fairies helped make a small party for Aurora's wedding and Prince Philip magically made dresses and garden and altar decorations. Everyone seemed happy, including Maleficent, who initially opposed this marriage because she was worried that it would end like what she had experienced.

S-5 (Setting 5)



In this scene, it appears Maleficent is flying freely in the sky together with little Dark Fey. They laugh happily, seem to feel the freedom of life and fly wherever they want. Maleficent brought some of Dark Fey's children to live with him in the Moors after Aurora married and became a princess of the kingdom of Ulstead. In the end, peace and security of life can be obtained by the creatures of the Moors kingdom and the Dark Fey.

4) Characterization through Internal Action

A-4 (Action 4)



In this scene, Maleficent and Queen Ingrith continued to argue and suddenly Ingrith's favorite cat tried to attack Maleficent on the dining table but failed

because Maleficent first used her magic to freeze the queen's favorite cat. Suddenly, everyone in the palace was shocked to see this, including the queen who was immediately angry. Then Maleficent returned the cat to its original state, and the cat immediately left the room where the dinner was being held. As Warren stated that Internal action appears from the character's emotion and mind which control memories, fantasies, secret, daydream, desire and unsaid though.

A-5 (Action 5)



Maleficent glared like an eagle at Aurora, her anger rising until she gave off a green glow with a face holding back something that was about to overflow. But Aurora remains firm in her desire to marry Prince Philip, while Maleficent already thinks that their marriage will only be a disaster for the life of the Moors kingdom and all its creatures. As Warren stated that Internal action appears from the character's emotion and mind which control memories, fantasies, secret, daydream, desire and unsaid though. All of them come out in the film visually, the director can demonstrate the character thoughts or imagination by method of shot.

S-2 (Setting 2)



In this scene, it shows Maleficent flying around a new place where she has just met for the first time. She saw Dark Fey's life in that place, she saw a creature similar to her, after so long he finally understood that she was not alone. As Warren stated that Internal action appears from the character's emotion and mind which control memories, fantasies, secret, daydream, desire and unsaid though. Maleficent, who initially seemed doubtful and confused, finally realized that all this time, species like herself had been hiding from the outside world for safety because humans have always been a threat to their safety.

A-11 (Action 11)



In this scene, Connel is seen lying limp after being hit by an attack from the Ulstead royal soldiers who attacked the Moors. Connel, who is known as the leader of the Dark Fey army, can now only lie down, this makes Maleficent sad for Connel's condition and also furious over the treatment of Ulstead soldiers to his people. This even triggers Maleficent's revenge against the Ulstead royal soldiers who are under the leadership of Queen Ingrith.

A-13 (Action 13)



In this scene, we can see Maleficent pressing her forehead against Connel's forehead. Connel, who knows that his life will not be long, tries to transfer all the power he has to Maleficent, this he does so that Maleficent can bring the Dark Fey and Moors to their rightful place and live safely without fear of threats. Connel held Maleficent's hand and their foreheads pressed against each other. Instantly there was a light that surrounded them and suddenly Connel was gone after the light disappeared.

Conclusion

After depicting the result of the research, there are four sort of characterization connection that ecofeminist have identified as important to understanding the connection between feminism and environment which related to the ecofeminist position (nature and women connection) in the Film Maleficent according to Warren's theory in Hegarsari 2017. The important aspect of ecofeminism that we can learn from film Maleficent that based on Warren theory in Hegarsari 2017 is the value of protect and maintain natural systems.. It is shown by the scene and the dialogue from the main character in film Maleficent. Furthermore, after finding the, the researcher also interprets the sort of characterization connection of ecofeminism that the researcher used Warren theory in Hegarsari 2017 to indicates the characterization, of ecofeminism which reflected in film Maleficent.

References

- Agustin, M. (17 Oct 2019). Review Film: Maleficent: Mistress of Evil, Kembalinya Angelina Jolie sebagai Legenda Penyihir Jahat. *BeautyJourna.id*.
- Annete Gough & Hillary Whitehouse. (2020). Re-Collecting Feminist New Materialism/Ecofeminism/Climate/Education. *Routledge Environmental Education Research*.
- Annur, F. N. (2015). Women Representation in Maleficent Movie. *Universitas Muhammadiyah Yogyakarta*.
- Asmawati, N. (2015). Maleficent's Character Development as Seen in Maleficent Movie. *Universitas Islam Negeri Sunan Kalijaga*.
- Asminda, L. F. (2018). The Analysis of Maleficent's Characterization As The Main Character In Maleficent Movie By RObert Tromberg. *Universitas Islam Negeri Sulthan Thaha Saifuddin*.
- Biehls, J. (1991). Rethinking Ecofeminist oilitcs. *South and Press*.
- Carter, N. (2014). The Use of Triangulation in Qualittative Research. *Oncology Nursing Forum*, 545-547.
- Chen, L. (2014). Ecological Critism Based on Social Gender: The Basic Principles of Ecofeminism. *Higher Education of Social Science*, 67-72.
- Diany, A. (2017). Representasi Feminisme Dalam Film Maleficent. *ProTVF Universitas Telkom*, 139-150.
- Estevez-Saa, M. (2018). The Ethnics and Aesthetics of Eco-caring : Contemporary Debates on Ecofeminism(s). *Women's Studied An Interdisciplinary Journal*, 123-146.
- Ewen, M. (2015). Female and Male Teacher's Pro-Environmental Behaviour, Conception and Attitudes Towards Nature and The Environment Do Not Differ : Ecofeminism Put To The Test. *Asia Pacific Forum on Science Learning and Teaching*.
- Gaard, G. (2011). Ecofeminism revisited: Rejecting essentialism and re-placing species in a material feminist environmentalism. *Feminist Formation*, 26-53.
- Gough, A. (2014). Generating a gender agenda for research in environmental education in International Hand Book of Research of Environmental Education. *New York : NY Routledge*, 375-383.
- Gough, A. Russell, C Whitehouse. (2017). Moving gender from margin to center in environmental education. *Journal of Environmental Education*, 5-9.
- Grace, I. (2017). Penindasan Perempuan Dan Alam Dalam Prespektif Ekofeminisme Pada Film Maleficent. *Universitas Katolik Widya Mandala Surabaya*.

- Guion, L. A. (2011). Establishing the Validity of Qualitative. *IFAS Extention*.
- Halidasia, N. (2016). The Character Alternation of Maleficent from 'Sleeping Beauty' into 'Maleficent' Movie. *Universitas Islam Negeri Alauddin Makassar*.
- Harvester & Blenkisop. (2011). Environmental Education and Ecofeminism Pedagogy. *Canadian Journal of Environmental Education*, 120-134.
- Hegarsari, D. (2017). An Analysis of Female Main Character in Maleficent (2014) Film Viewed by Ecological Feminism. *UIN Syarif Hidayatullah Jakarta*.
- Kulnieks, Roronhiakewen Longboat D. & Young K. (2013). Contemporary studies in Environmental. *The Netherland, Sense Publisher*.
- Ling, C. (2014). The Background of Theoretical Origin of Ecofeminism. *Canadian Academy of Oriental and Occidental Culture*, 104-108.
- Llora-Bidart. (2015). A Political Ecology of Education in/for The Antropocene . *Environment and Society*, 128-148.
- Lorber, J. (2010). Gender Inequality : Feminist Theory and Politics. *Oxford University Press*.
- Luppinaci, J. (2013). Eco-Ethnical Environmental Education : Examining our perception of being human. *Rotterdam, Netherlands : Sense Publisher*, 185-200.
- Luppinaci, J. and Happel A. (2016). An Ecojustice Framework for Teaching to Resist Human-Supremacy in School. *The Educational Significance of Human and Non-human Animal Interaction*, 13-30.
- MacGregor. (2014). Feminist Ecological Citizenship and the Post-Politics of Climate Change. *Hypatia*, 617-633.
- Mallory, C. (2010). What is Ecofeminist Philosophy? Gender, Nature, And The Political. *Environmental Ethnics*, 305-322.
- Martusewich, R. (2013). Bringing a Critical Ecofeminist Analysis to Ecojustice Education. *Contemporary Studies in Environmental and Indegenous Pedagogies : A Curricula of Stories and Place*, 259-272.
- Mies, M. (2014). Ecofeminism London : Zed Book.
- Mukherjee, R. (2013). Ecofeminism : Role of Woman in Environmental Governance and Management. *Galgotias Journal of Legal Studies*.
- Net-Industries. (2013). Women's Right - U.N. Decade for Women and World Conferences on Women. <https://science.jrank.org/pages/9668/Women-Rlght>.
- Nhanenge, J. (2011). Ecofeminism towards intergrating the concern of women, poor people, and nature in the development. *Univerisity Press of America*, 8-13.

- Nogueira. (2013). Women's Action Agenda : Toward a Healthy Planet. *International Institute for Sustainable Development*.
- Nogueira-Godsey, E. (2011). Transforming Feminism : Religion, Women, And Ecology. *Journal for The Study of Religion*.
- Oakley, J. (2011). Animality and Environmental Education. *Canadian Journal of Environmental Education*, 8-13.
- Onwuegbuzie, A. J. (2012). Qualitative Analysis Techniques for the Review of the. *The Qualitative Report 2012 Volume 17, Article 56*, , 1-28.
- Orias, D. & Caputi, J. (2013). Monoculture and Mono-woman : An Ecofeminist Critique. *FAURJ 2*, 1-6.
- Piersol & Timmerman. (2017). Reimagining environmental education within academia : Storytelling and Dialogue as Lived Ecofeminist Politics. *The Journal of Environmental Education*, 10-17.
- Rapkin-Citrenbaum, B. (2020). The Case for Ecofeminism as a Solution-Oriented, Critical Theory Approach.
- Reed, J. J. (2015). From Ecofeminism to Ecosexuality : Queering the Environmental Movement. *ecosexbook.com*, 92-102.
- Sakellari, M. & Skanavis, C. (2013). Environmental Behaviour and Gender : An emerging area of concern for environmental education research. *Applied Environmental Education and Communication*, 77-87.
- Spannring, R. (2017). Animals in Environmental Education Research. *Environmental Education Research*, 63-74.
- Warren, K. J. (1987). Feminism and Ecology : Making connection. *Environmental Ethnics*, 3-20.
- Warren, K. J. (1990). The power and the promise of ecological feminism. *Environmental Ethnics*, 125-143.
- Warren, K. J. (1997). Ecofeminism ; Women, Culture, Nature. *University Press*.
- Warren, K. J. (1998). Introduction to Ecofeminism. *Environmental philosophy : from animal rights to radical ecology*, 263-276.
- Yanni, R. (1957). *Literature Reading Fiction, Poetry, Drama, and The Essay*. New York: M. Grow Hill.